



REFOREST



Funded by
the European Union



Designing your agroforestry system with the FarmTree Platform

A case study from the UK Living Lab

Farms. Trees. Impact. Quantified.

Steffie Rijpkema

www.farmtree.earth



Potential benefits of trees

Fruit and nut trees

Add value from additional products

Shade trees

Reduce temperatures and water loss

Wind breaks

Reduce wind speeds and minimize soil erosion

Other services of trees

Carbon sequestration, Biodiversity, Soil improvements, Pollinator attraction, Pest and disease reduction



Potential trade-offs

Productivity, Competition for resources, Increased (labor) costs, Long-term commitment



The Challenge



Millions of trees are planted yearly in Agriculture, Forestry and Other Land Use (AFOLU) projects... but what is the impact?

Multiple long-term benefits and trade-offs are difficult to predict and quantify

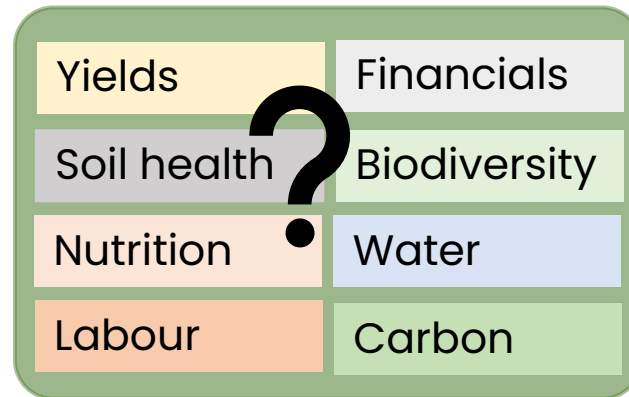
Tree planting



Complex surveys



Potential impact



Incomplete data

Problem

Impact & risk assessment of nature-based solutions is challenging, which is **a barrier to investments and therefore implementation**

The Solution



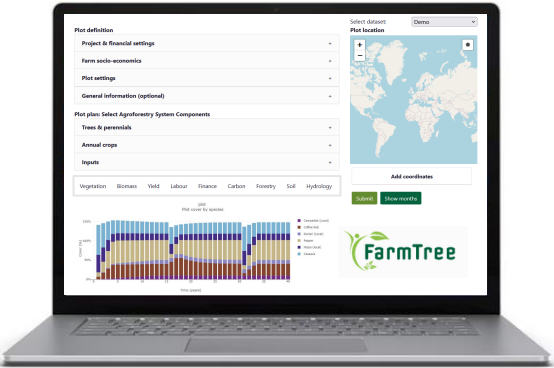
Create your virtual AFOLU system and calculate and optimize the social, environmental and economic impact!

Tree planting



Simple survey

FarmTree
Platform

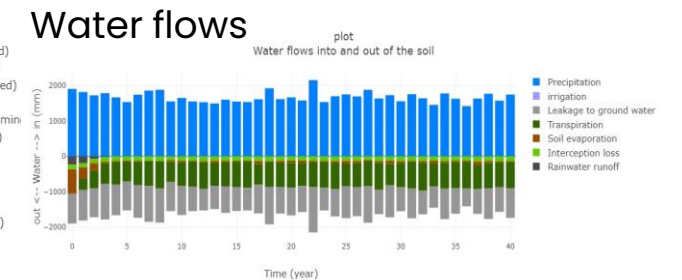
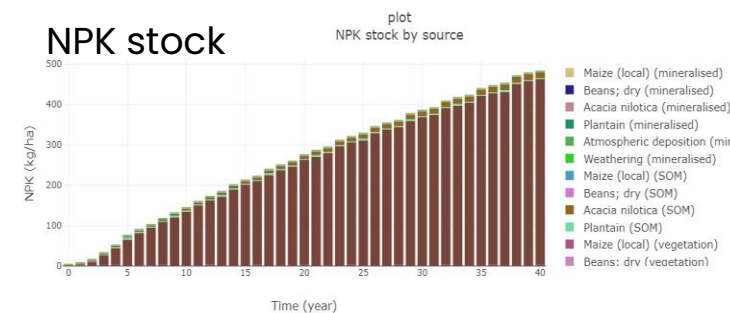
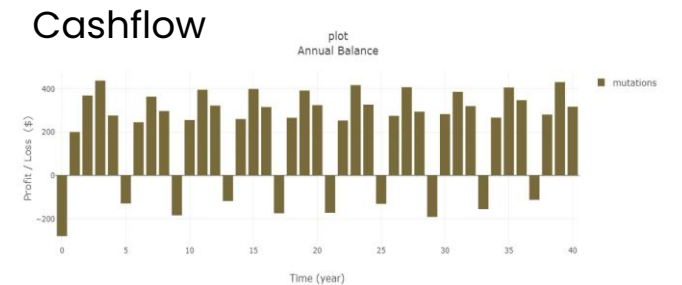
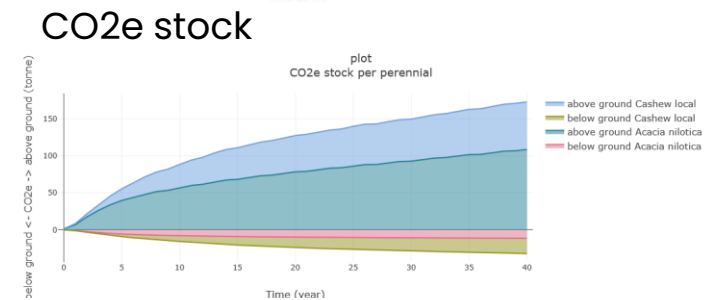
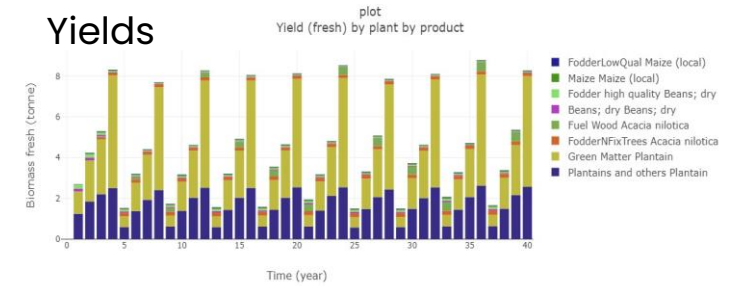
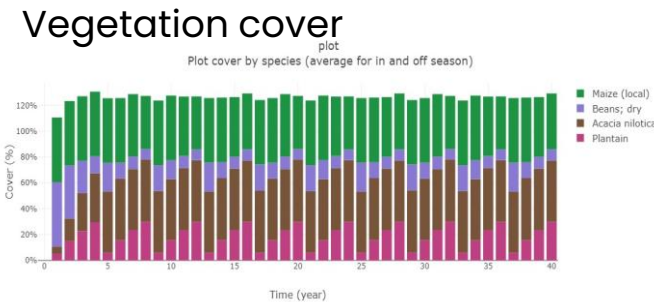
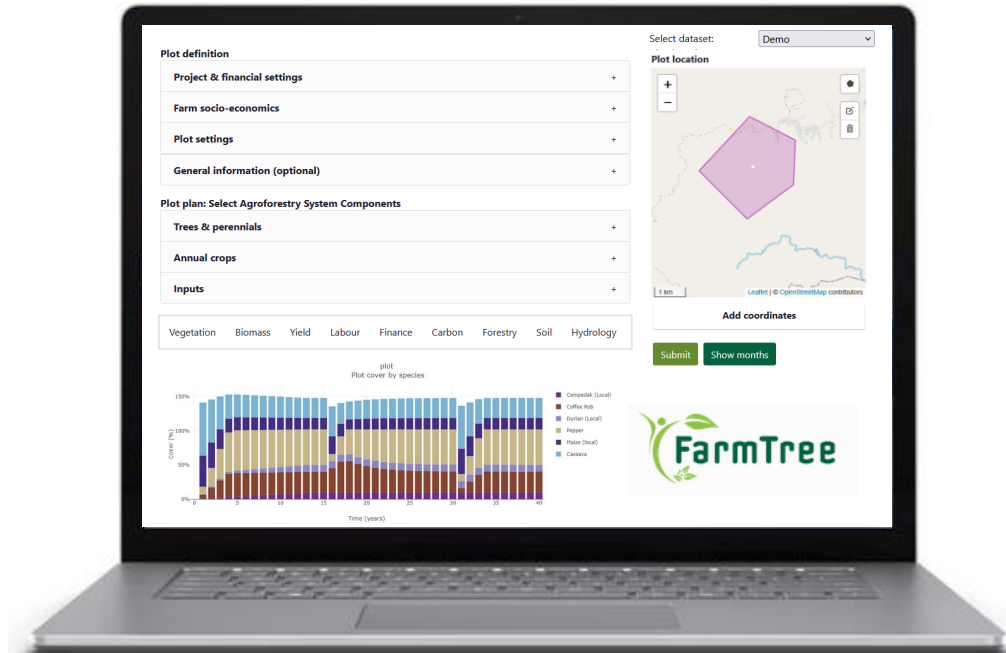


Holistic output

Impact projections

Yields	Financials
Soil health	Biodiversity
Nutrition	Water
Labour	Carbon

FarmTree Platform Interface and Output



- Fast** – accessible and few data required
- Flexible** – default data adjustable
- Holistic** – reports on SDGs
- Credible** – science-based

FarmTree Species Database

The online FarmTree Components of Agroforestry Systems (CAFS) database for **species and inputs parameters** allows for fast & flexible species definition

Use your local expertise to **quickly define new species and adapt their management regimes** (like planting distance) for modelling on any virtual plot on the planet

- Common hornbeam
 - Common oak
 - Fagus sylvatica ([Hedgerow])
 - Panamanian oak
 - Silver birch
 - Ulmus sp
 - Birch ([Forest plantation])
 - > N-Fixing timber Temperate
 - > Leguminous fruit
- > (Tropical - Beverage perennial)
- > (Tropical - Fruit tree)
- > (Tropical - General)
- > (Tropical - Horticulture perennial)

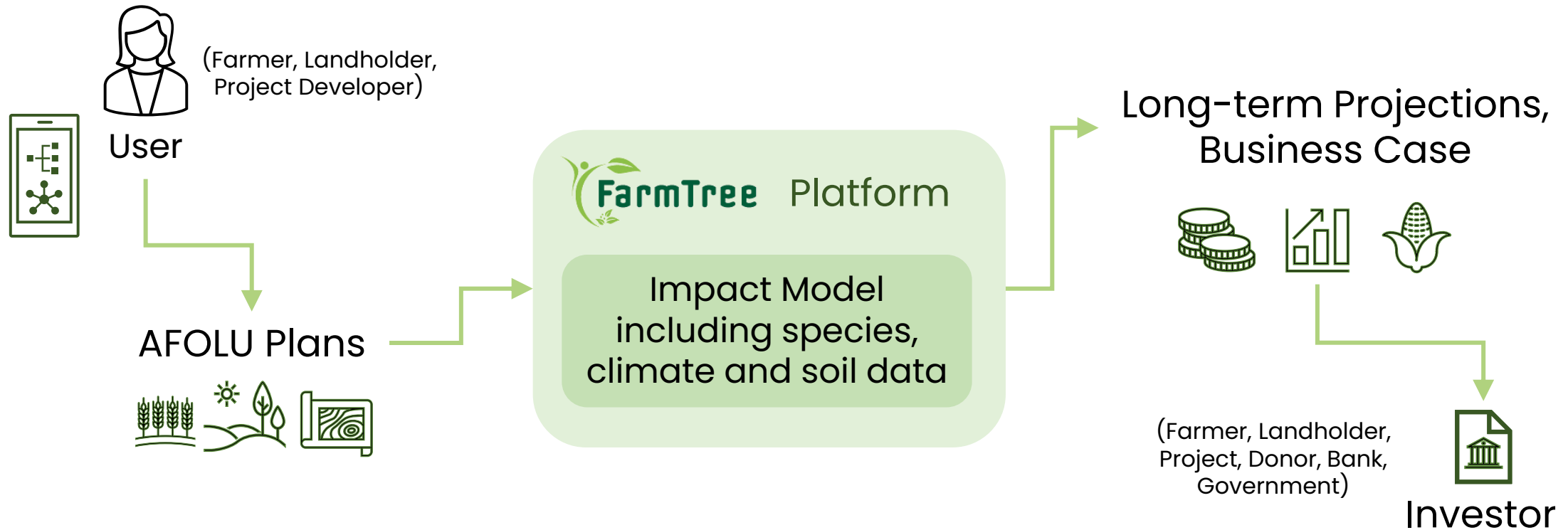
Parameters
Growth
Life cycle
Wood density
Biomass allocation
Roots
Constraints
Growth conditions
Costs
Labour

FarmTree Platform



The FarmTree Platform connects **PM&E Tools** ...

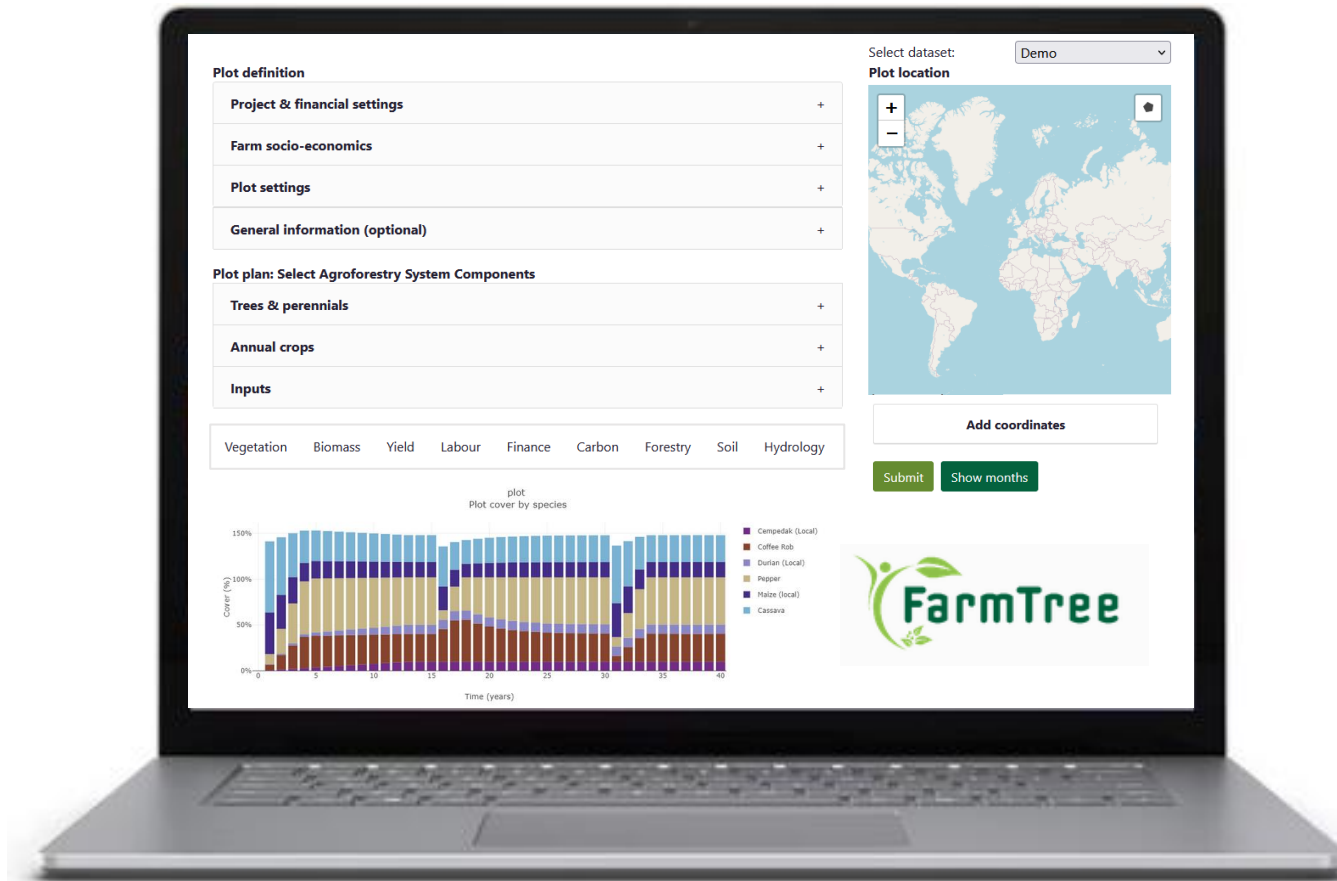
... that enable users to make **investment plans**



Interactive part: Slido questions

We would love to hear your input!

FarmTree Platform: The Cockle Park case



<https://tool.farmtree.earth/>



REFOREST



Funded by
the European Union

Survey + Free access to the FarmTree Temperate data

We would love to hear your feedback!

Contact us



tool.farmtree.earth



www.farmtree.earth



www.linkedin.com/company/farmtree-b-v



info@farmtree.earth




ReForest survey:

qualtricsxm68gcv46xw.qualtrics.com/jfe/form/SV_4GvmxCijNSKPdB4

A large, light green arrow pointing to the left, containing text.

Register and try the
FarmTree Platform with
Temperate species for FREE!

A large, light green arrow pointing downwards and to the right, containing text.

Give your opinion on the use
of the FarmTree Platform!

Thank you for your participation

We would love to hear your questions!

Annex: Available FarmTree resources



- Overall introduction to FarmTree: www.farmtree.earth
- Some specialised instruction videos can be found at: <https://www.farmtree.earth/instructions>
- Documentation and justification of the FarmTree Model: https://drive.google.com/file/d/1YA-25htrIk_8t8I5i-ZHbPw-u85Jl__W/view
- Registration for a Demo or Client Account: <https://tool.farmtree.earth/Identity/Account/Register>